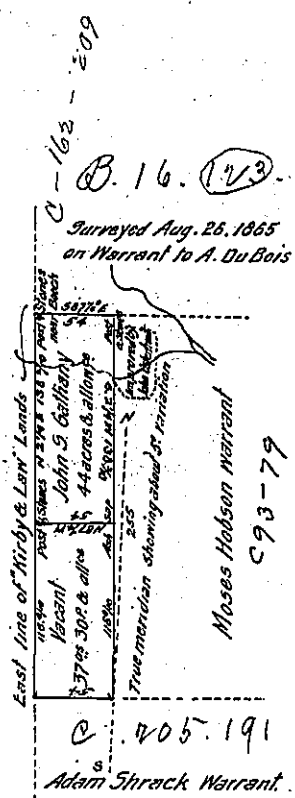


C. 71. 64

"Edward Carrigues" Warrant

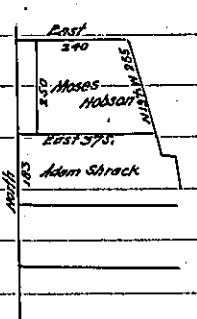


Draft of a tract of Land situate in Great Bend township Susquehanna County adjoining land lately surveyed to Abraham Du Bois on the North, lands in the warrant name of Moses Hobson on the East, vacant land on the South, and land in the warrant name of Edward Carrigues on the west. Surveyed Sept. 12, A.D. 1865, in pursuance of a Warrant granted to John S. Callahan, dated July 5, 1865; Containing forty four acres, and allowance of six per cent

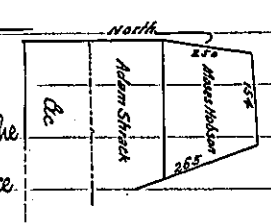
To Jas. R. Barr Esq.
Surveyor Genl.
Harrisburg Sept 25, 1865

James W. Chapman
County Surveyor for Susquehanna Co.

Note. - It is perhaps my duty to state that Abraham Du Bois Esq. has a Deed from S. D. Wharton Esq. of Philad^a upwards of thirty years ago, for the western part of the "Moses Hobson" Warrant, covering the whole of the above survey to the Kirby & Raw line; as it was generally supposed that said Warrant extended to it, the same as the "Adam Strack" warrant & others south of it; and he had contracted to sell this corner of his purchase including this survey to John Osterhout who now has a small improvement a small segment of which is cut by the eastern line, as shown by a dotted line - (say about 40 perches by 4 or 5 in the widest part). But I found in the hands of S. Boyle, former County Surveyor, a connected Draft of Resurvey of the "Moses Hobson" & other tracts south of it, made by Benjamin Tenbury (a well known Top Surveyor 50 or 70 years ago), a few years after their original location, in the marginal notes of which he says he supplied the lines not originally run, distinguishing the west line of "Moses Hobson" as one, in the shape as here given, leaving a vacant strip on the N. side on searching diligently, tho' from the destruction of the timber in the vicinity of the corners, no marks could be found to fix them, a plainly marked old line was found immediately wherever there was timber, counting distinctly 59 years, at 54 perches from the Kirby & Raw line. On again recurring to the Draft made by Tenbury, I found his resurvey dated May 1806, answering precisely to the age of this line. His re-survey also put the length of the N. line of Moses Hobson, at 240 perches. By actual measure I found it to be 295 to the Kirby & Raw line, deducting the 54 from which, leaves 241.



Mr Boyle also showed me an official copy of several of those ^{Drafts} in a connected form like this: -
showing that although the Draftsman took it for granted that the N. line of the Hobson tract was in line with the others, he had to bend it out of a north course to make it meet the distance of the north line. - All these circumstances seemed to confirm the genuineness of the plain old line I found, and to justify me in surveying & returning on this Warrant for 40 or 44 acres & allowance (the extent to which I could add a surplus) of this strip of land as vacant.



Very Respectfully
James W. Chapman, S.

IN TESTIMONY that the above is a copy of the original remaining on file in the Department of Internal Affairs of Pennsylvania, made conformably to an Act of Assembly approved the 16th day of February, 1833, I have hereunto set my Hand and caused the Seal of said Department to be affixed at Harrisburg, this

day of January 1902
Geo. B. Perry
Secretary of Internal Affairs.